

Recreation ground projects at July 2020 updated August 2020, Sep 2020, Oct 2020

Current projects & S106 status

NB In spite of several site meeting, no further quotes have been offered.

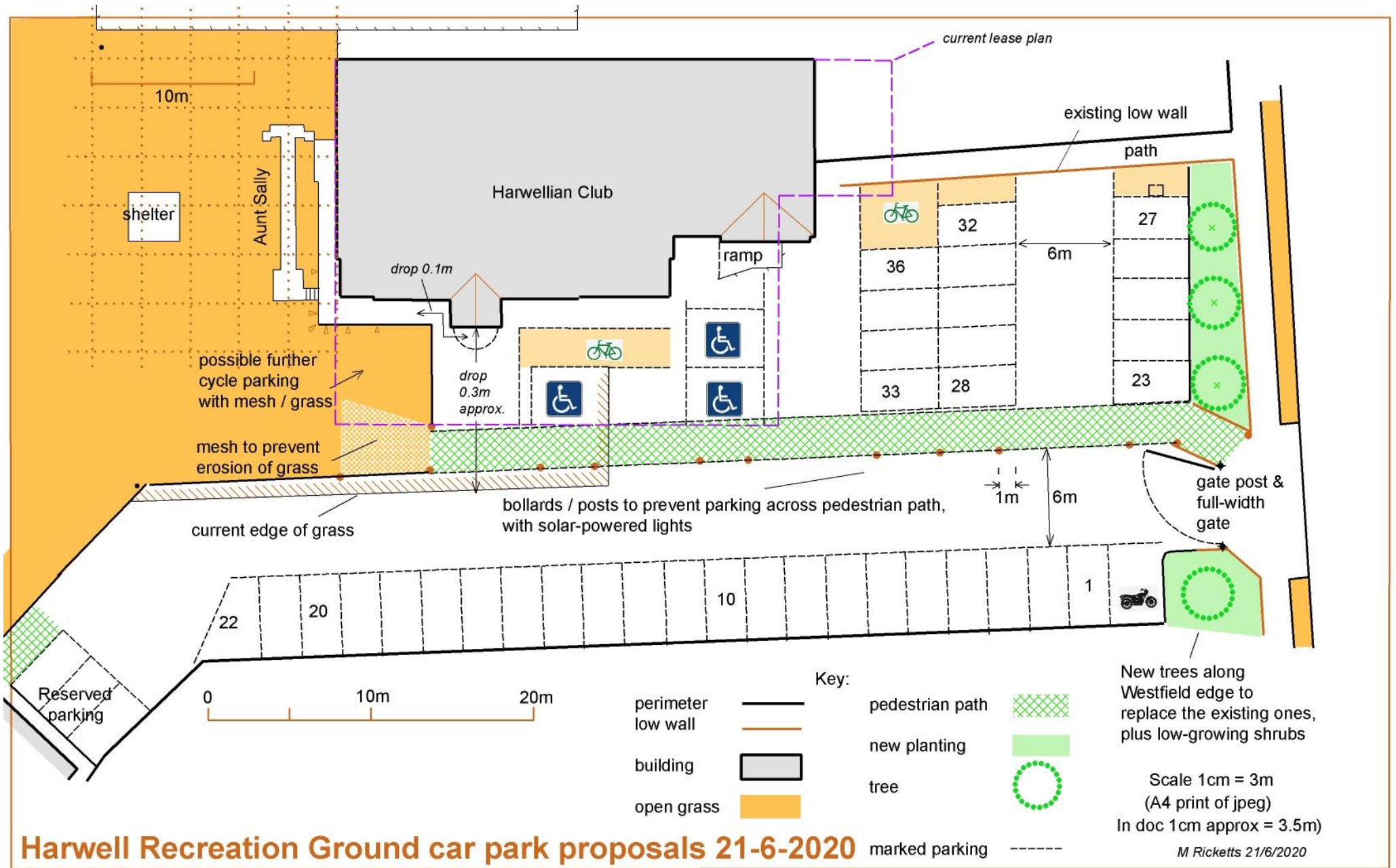
Staff building – PC has applied for £42,492 S106 funds and £31922 Of reserves is set aside for the building, including £700 for furnishing. Contractor has been appointed. Utilities companies are being contacted; may be unknown costs associated with connections unless supply can be taken from pavilion. Problems with this option so far include scout group's need to have own supply for charitable status, possibly not enough load for 2 buildings in slave meter configuration.

£14270 remains in reserves which should be either allocated to unforeseen costs on build or could be put to new equipment, eg replacing broken spinner bowl with inclusive roundabout/ replacing spinner bowl with new spinner, installing toddler equipment and monkey bars. Quotes cited here are cheapest obtained and are not from same company. Quotes do not include safety fencing or extras such as post-installation testing – see individual quotes.

ACTION REQUIRED – *decide on spend of £14270 reserves extra to project & location of any new equipment*

Rec access - PC has already claimed £10,701 S106 funds for rec access & spent £7,000 while further spending is on hold while PC considers refurbishing/redesigning car park. £3701 remains in reserves. Will need to let S106 team know if plans change from original gates, solar lights and planters. Spend by date Jan 2028. Separate discussions are ongoing with The Harwellian re: amendments to the lease to show an area of open space west of the club building. Quotes sought for re-marking/resurfacing/replanting as per latest suggested plan below – no funding available at this time. No quotes as at 20 Oct 2020 in spite of several requests. (NB M Ricketts to update plan for Harwellian lease, which may impact on final design of car park).

ACTION REQUIRED – *finalise plans for car park & entrance gate October 2020 and let S106 team know of any amendments. £3701 remaining in reserves is specifically for gates, planters and solar lighting unless changes can be agreed with S106 team. Rest of refurb/remarking may have to be put on hold pending quotes and lack of funds.*



Future projects

Following articles in HN and previous discussions in 2019/20, plus discussions at the September 2020 APM, the PC wished to consider various ideas for the rec, shown in the table below, to be funded from S106 money where possible. In theory, the available funds, including PC reserves, will permit the PC to carry out most of the projects stated. Toddler train, activity wall & spinner bowl could be funded from PC reserves (min. £8130 plus extras, £14270 available), S106 funds for MUGA/youth sport facility could be used to pay for monkey bars, basketball hoop & gym equipment (min. £9522 cost, £11912 available), S106 POS funds £96000 and BMX track funds £8893 could be used to pay for the pump track & perimeter track, with possible funds left over for fencing around the wildflower section (cost min. £86870 excl fencing, £104893 available). Potentially there is another £31369 S106 available from the agreed amount for sports facilities (Alder View development).

Project	Source of funds	Quotes	Fund using	Notes, cost
Permanent football goal not necessarily with all weather surface	IN PLACE 2019 & 2020 (latest courtesy of HHYFC)	nfa		
Swing-shut gates at each pedestrian entrance	DONE 2019 , stiles replaced with gates	nfa		
Toddler play equipment – source of funds S106 POS or PC reserves	POS B Hill £96000 or £14270 PC reserves	£2497 - £12482 for train £3515 for activity wall £10141 tower unit Extra for some surfacing, delivery, safety fencing etc	£14270 reserves	Install train, activity wall in play area, replace spinner bowl. Total cost £8130 plus some extras
Inclusive play equipment – possible source of funds PC reserves	POS B Hill £96000 or £14270 PC reserves	£2118 spinner £9894 roundabout Extras as above	“	See above
Monkey bars	MUGA/youth sport facility Gr Rd N £11912 or £14270 PC reserves	£1913 – 3419 Extras as above	MUGA £11912	Install bars nr zip wire? Cost £1913 plus some extras.
New gym equipment near existing ones or in separate location– source of funds S106 various	MUGA/youth sport facility Gr Rd N £11912	£3622 - £5609 multigym or 4 pieces	MUGA £11912	Install multigym, cost £5609 plus extras – APPROVE LOCATION
Half pipe or skate park – source of funds S106 various – NOT CURRENTLY INCLUDED IN PROPOSALS as separate project but may be possible to obtain funds towards pump track instead				
Basketball hoop – source of funds S106 various, see table	MUGA/youth sport activity Gr Rd N - £11912 Community rec facilities M View -	c. £2000	MUGA £11912	Install basketball hoop with surfacing £2000 – APPROVE LOCATION

	£4512 (not approved yet)			
Pathway/track around rec perimeter - should not be gravel or look urban, should be wheelchair-friendly, should be robust enough to not be affected by car parking eg at Feast, should have 100m markers – source of funds S106 POS plus grant, see table	POS B Hill £96000 Sports facilities in parish A Vw £31369 Grants eg British Cycling, Places to Ride	£52520 - £134808	POS £96000	Cost £52520
Pump/BMX track near play area/on far side of bank – source of funds S106 or grant	BMX/skate/pump track R Rd - £8893 Sports facilities in parish A Vw £31369 POS B Hill £96000 MUGA/youth sport facility Gr Rd N £11912	£34350 - £49000	POS £96000	Cost £34350
Orchard/wildflower area but should not be allowed to look shabby or used by dogs – source of funds S106 POS or PC budget	POS B Hill £96000 PC budget 2021-22 Woodland Trust gives packs once projects agreed		“ for fencing off wildflower area	Cost ??? ~ £18000 available

CONCLUSION

Use of reserves left over from staff building project – toddler equipment, inclusive play equipment if funds left after paying for utilities

S106 application Grove Rd North for MUGA/youth sport facility (£11,912)– monkey bars, gym equipment, basketball hoop. Any leftover funds to be put to pump track?

S106 application B Hill Public Open Space (£96,000) – pump track and perimeter track, fencing for wildflower area

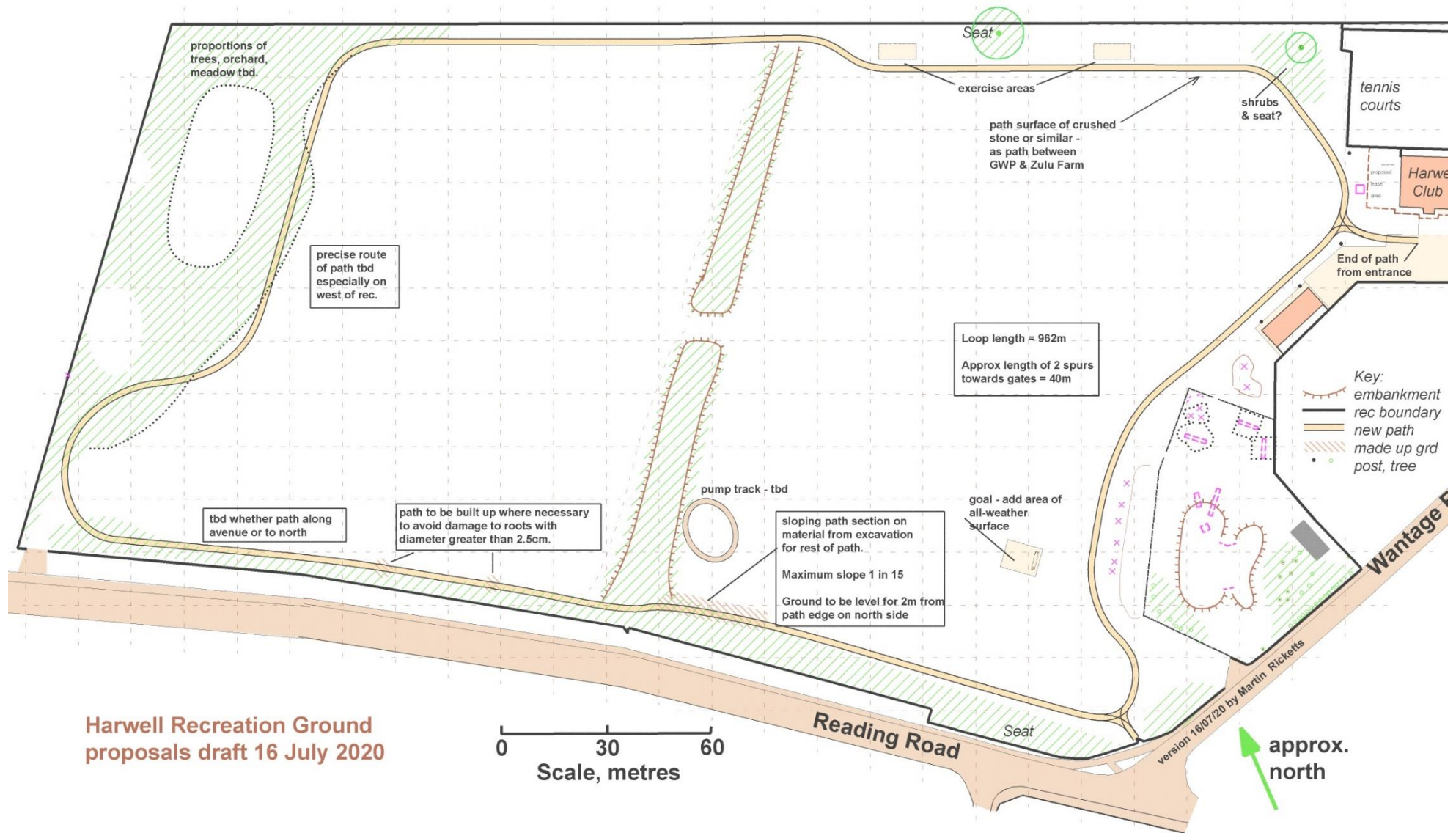
S106 application R Road for BMX/skate/pump track (£8,893) – pump track

S106 application M View for community rec facilities (£4,512 – not available yet) – play equipment if shortfall from staff building reserves?

S106 application Alder View for sports facilities (£31,369) – perimeter/pump tracks if shortfall

CIL 2019-20 (£6,253) – tbc. CIL funding can be spent on roads, schools, health, sport/recreation, open spaces, social facilities etc within 5 years of receipt.

Plan of previously-discussed suggestions for rec (M Ricketts 2019)



Harwell Recreation Ground proposals draft 16 July 2020

0 30 60
Scale, metres

Reading Road

approx. north

ACTION REQUIRED – *decide on S106 applications, approximate timeline & final locations for all equipment. Clerk to apply for S106 funding.*

[This document does not include a previous speculative application (on hold, from Alder Vw development) for gym equipment, climbing wall, skate park pieces & basketball hoop, total application £33,347 as this application was left on hold following VWHDC requests that inclusive equipment was installed. Total amount potentially available from the original £81,891 held by VWHDC is now £31369 for sports facilities in the parish. Spend by date Mar 2025.]